

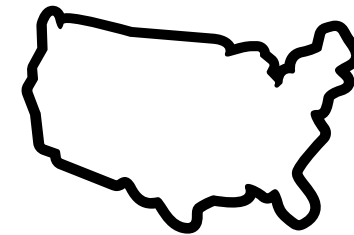
FOOD WASTE TRIVIA

Want to know more about food waste? Try our ten question trivia! It's easy to play at home, at work, or at school. This trivia is a fun way to learn about the impact of food waste and why it's important to reduce it.

If food waste was a country, would it would be the third biggest emitter of greenhouse gases after USA and China?

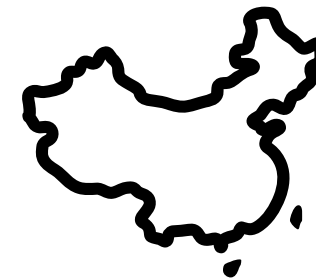
A) True

1



B) False

2



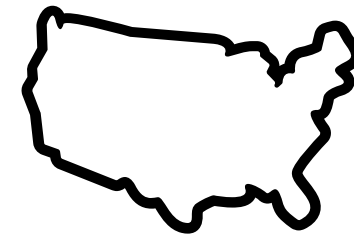
?



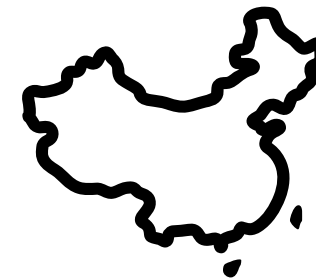
A) TRUE! If food waste were a country, it would be the 3rd largest emitter!

A) True

1



2



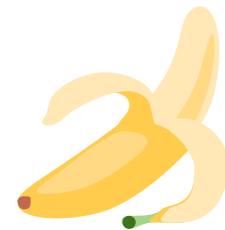
B) False

?



What is not a commonly wasted food?

A) Bananas



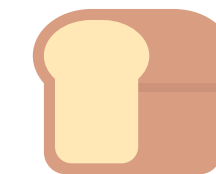
B) Frozen
Vegetables



C) Milk

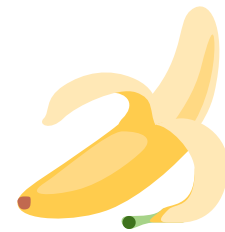


D) Bread



C - Frozen Vegetables are not commonly wasted

A) Bananas



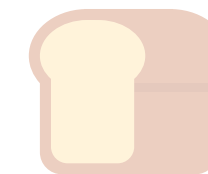
C) Frozen Vegetables



B) Milk



D) Bread



How many people rely on food relief each month in Australia?

- A)** 150,000 people
- B)** 500,000 people
- C)** 650,000 people
- D)** 2 million people



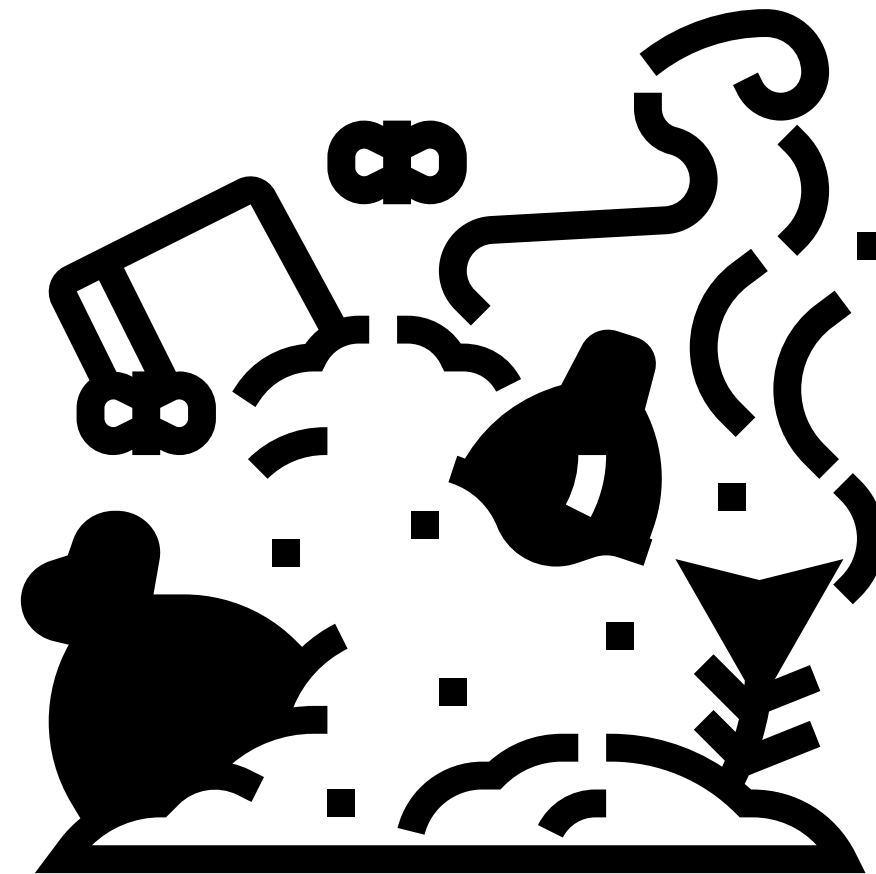
C - 650,000 people rely on food relief each month in Australia!

- A)** 150,000 people
- B)** 500,000 people
- C)** 650,000 people
- D)** 2 million people



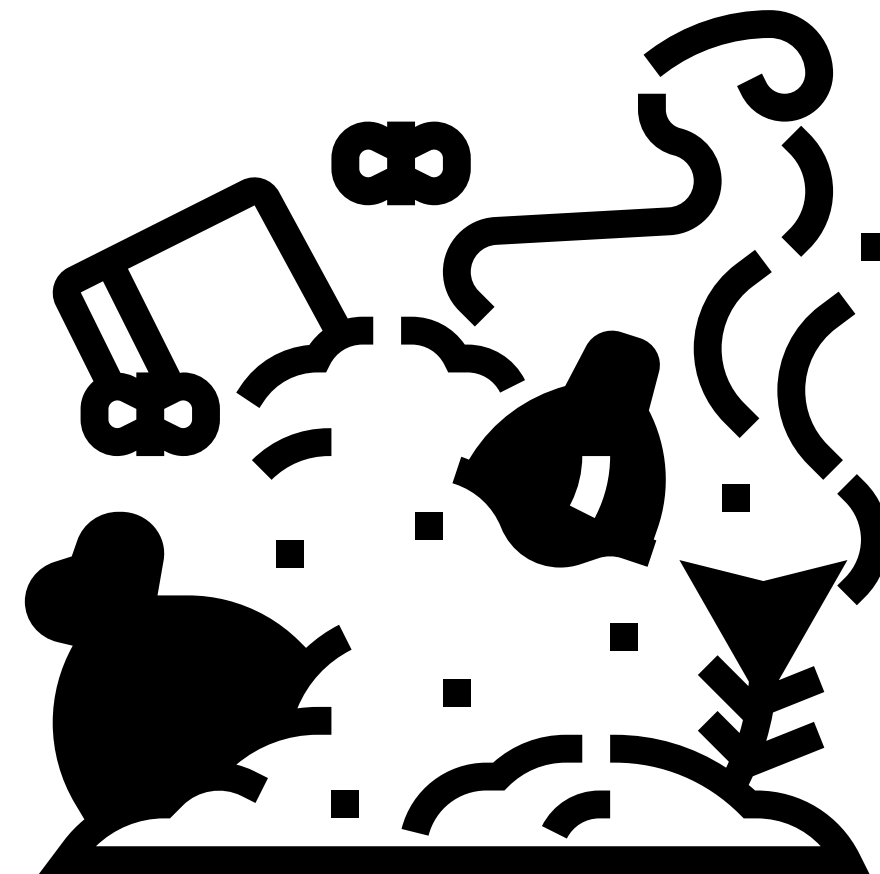
What greenhouse gas is produced by food waste rotting in landfill?

- A)** Carbon Dioxide
- B)** Nitrous oxide
- C)** Methane
- D)** Chloroflurocarbons



C - Methane is produced by food waste rotting in landfill

- A)** Carbon Dioxide
- B)** Nitrous oxide
- C)** Methane
- D)** Chloroflurocarbons



QUESTION 5

What percentage of food worldwide is never eaten?

- A)** 10%
- B)** 30%
- C)** 60%
- D)** 90%



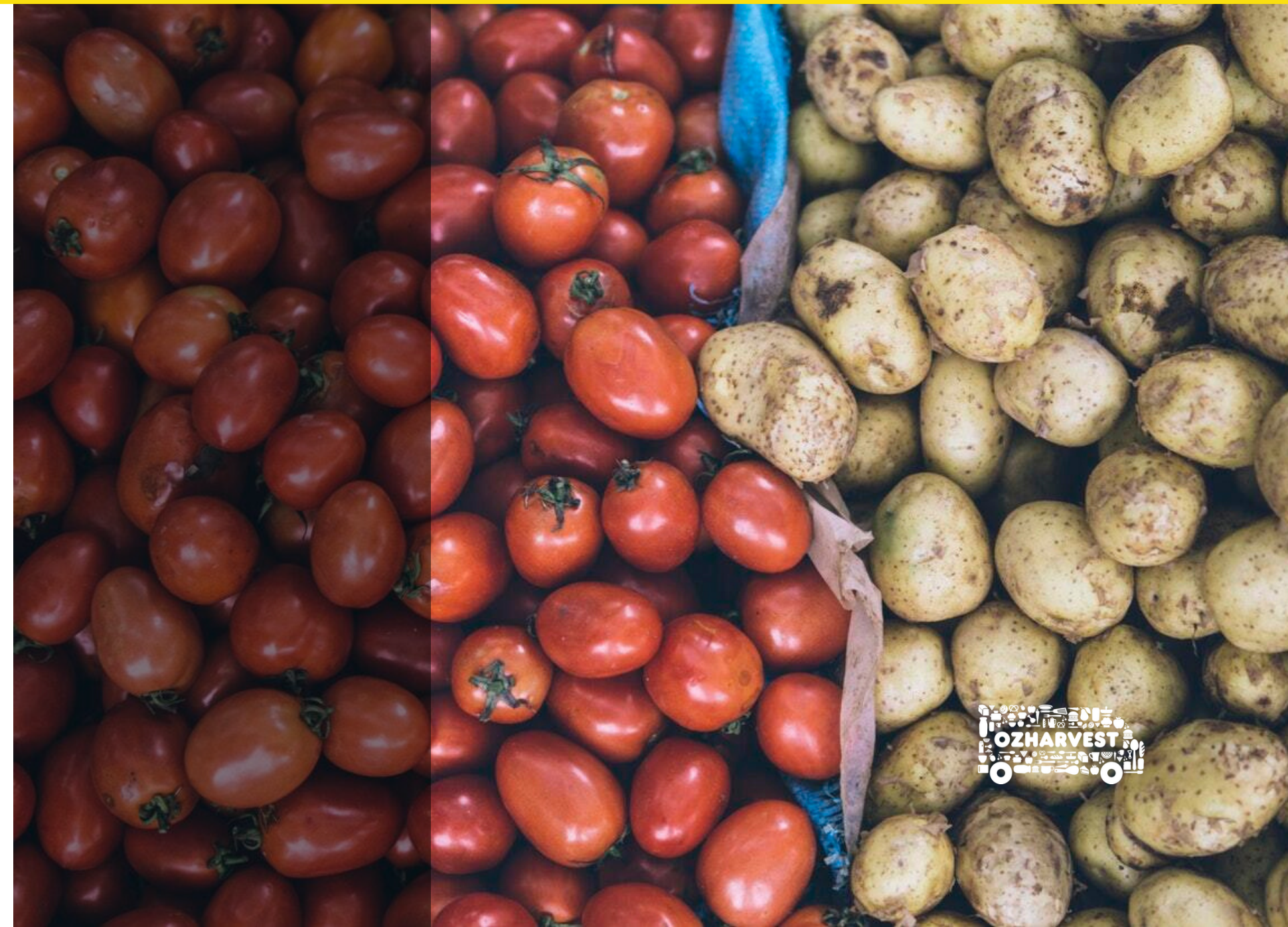
B - 30% of food produced is never eaten!

A) 10%

B) 30%

C) 60%

D) 90%



QUESTION 6

How many people could be fed if 25% of our food wasn't wasted?

- A)** 1 million people
- B)** 100 million people
- C)** 870 million people
- D)** 2 million people



C - 870 million people!

- A)** 1 million people
- B)** 100 million people
- C)** 870 million people
- D)** 2 million people



QUESTION 7

What else is wasted when we produce food that no one eats?

A) Water



C) Love



B) Fuel



D) All of the Above

D - All of the above

A) Water



C) Love



B) Fuel



D) All of the above

QUESTION 8

Wasting food wastes _____ of fresh water globally every year?

A) 25%

B) 8%

C) 45%

D) 33%



A - Wasting food wastes 25% of fresh water globally every year!

A) 25%

B) 8%

C) 45%

D) 33%



QUESTION 9

How much does food waste cost the Australian economy each year?

- A)** 90 million
- B)** 10 billion
- C)** 20 billion
- D)** 50 billion



C - Food waste costs the Australian economy \$20 billion each year!

- A)** 90 million
- B)** 10 billion
- C)** 20 billion
- D)** 50 billion



QUESTION 10

Australians waste one out of every five...

A) Bags of groceries



B) Pieces of fruit



C) Packets of spaghetti



D) Cartons of milk



A - Australians waste one out of every five bags of groceries!

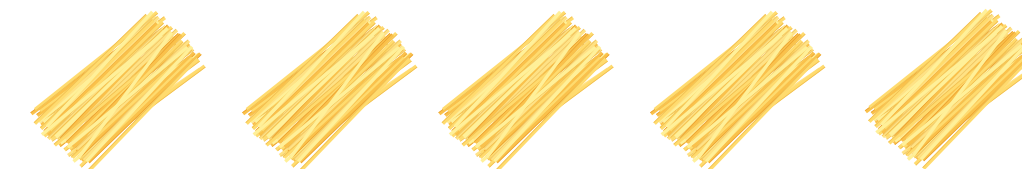
A) Bags of groceries



B) Pieces of fruit



C) Packets of spaghetti



D) Cartons of milk



FOOD WASTE TRIVIA ANSWER SHEET

Thanks for taking part in OzHarvest's Food Waste Trivia. For food saving hints and tips visit fightfoodwaste.org.

Question 1 - A) TRUE

Question 2 - C) Frozen Vegetables

Question 3 - C) 650,000 people

Question 4 - C) Methane

Question 5 - B) 30%

Question 6 - C) 870 million people

Question 7 - D) All of the above

Question 8 - A) 25% of fresh water

Question 9 - C) \$20 billion

Question 10 - A) Bags of groceries

FOOD WASTE TRIVIA REFERENCES

Question 1: [FAO Food Waste Footprint 2013](#)

Question 2: [Australian Food News 2017](#)

Question 3: [United Nations 2020](#)

Question 4: [World Wildlife Fund \(WWF\)](#)

Question 5: [National Food Waste Strategy 2017](#)

Question 6: [Food Bank](#)

Question 7: [OzHarvest](#)

Question 8: [Department of Agriculture, Water and Environment](#)

Question 9: [National Food Waste Baseline 2019](#)

Question 10: [EPA NSW](#)